

visam

Visam Concealed Cisterns



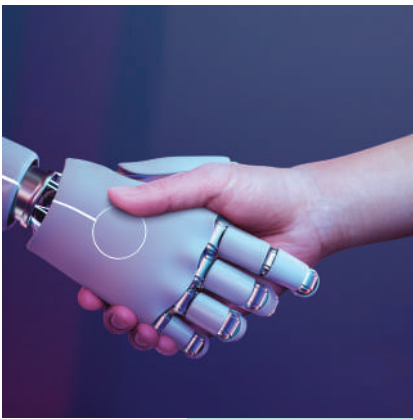
visam

*We continue to develop our high quality products
that exist from past to today.*



Eco-friendly products

We shape our business and investments for a more sustainable future



Our technologies shaping the future

We design products that offer innovative solutions in the bathroom industry with our R&D team by following the latest innovations in the market.



Quality, experience, trust

We're always one step ahead of technology, from assembly to the usage with our own developed innovative products.



INDEX

Concealed Cistern Specifications	6-19
Concealed Cisterns	20-37
Exposed Glass Body Cisterns	38-41
Frame Systems	42-53
Flush Plates	54-58



SINCE 1964

Visam, a family business that was founded in 1964, has been continuing to be the pioneer of the industry. For about 60 years; with its unchanging understanding of quality production, transparent sales policy and after sales services, Visam has been proud of being the best brand in Turkey in its sector. Visam products are completely consumer oriented with their functionality and quality. Our consumer-friendly products are produced with our half a century of knowledge, skills and experience. Our economic price policy, the high quality of our products, unlimited technical service, spare parts that we offer and the aesthetic value we added to bathrooms have brought us success in this market. As Visam family, we inspiredly strive to become the trusted brand of the industry with our product range increasing every year, our growing customer portfolio and our developing manufacturing Technologies.





High quality products suitable for every bathroom...

Visam, designs the products elaborately for offering ergonomic and business-facilitating solutions. Visam concealed cisterns can be used for all wall types with models suitable for brick and drywalls. The product range offers solutions compatible with different WC applications like wall hung WC pans, squatting WC Pans, back to back WC pans. In addition, it helps to renew the bathrooms quickly and stylishly by the glass body cistern with its' pre-wall application.



Visam Concelaed Cisterns

Long lasting concealed cisterns



Visam Silent Concealed Cisterns

Our products work very quietly thanks to the special tank filling system that we use. The increasing noises are prevented while the tank is filling up. The styrofoam used in the outer body supports sound insulation.



5 Years Warranty and 15 Years Spare Parts Guarantee

Visam products offer reliable solutions with their quality and durability. The robustness of our concealed cisterns relies on our high-tech manufacturing and engineering in product development. All concealed cisterns offer a 15-year spare parts supply warranty in addition to a 5-year warranty.



Adjustable Washing Volume

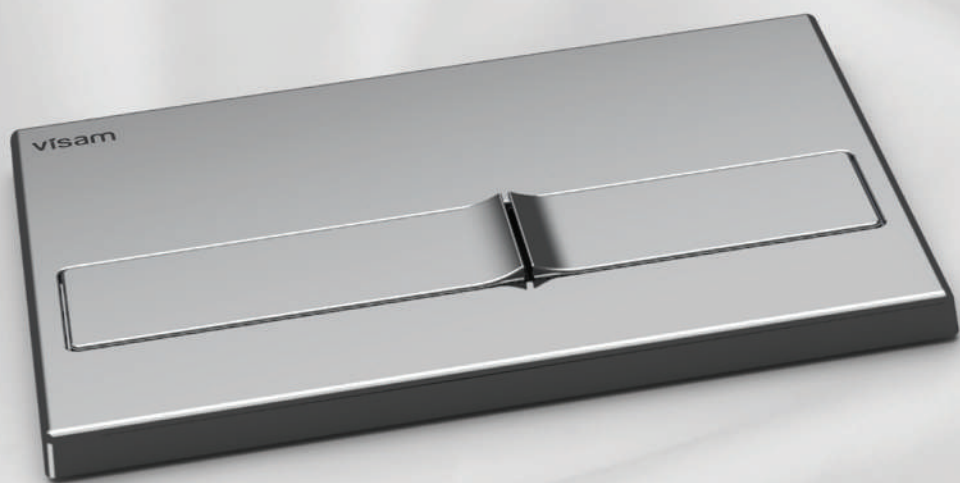


Visam concealed cisterns respond to different needs by providing less water consumption with smaller washing volume, thanks to special settings of flushing mechanism. The dual flushing system in the concealed cisterns provides 3 or 6 liters of washing opportunity and saves water.

Elevated Bathroom Design with Visam Flush Plates



Visam flush plates with different design options and colors add elegance to the bathrooms. Our 60 years of experience in industry and flexibility offer tailor-made solutions for projects.



Periodic tests are carried out in our laboratory according to the relevant EN standards for each manufactured part of Visam concealed cisterns, as well as for the products that have been assembled.

Overflow Test

Weight Test (Endurance Up To 400 Kg)

Leak Tightness Test

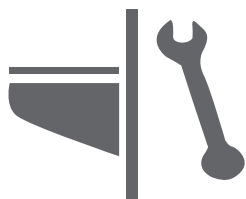
Flow Rate Test

Hydraulic and Mechanical Performance Test

Life Time Cycle (Reliability) Test



Water efficient



Easy maintenance



Easy installation



Endurance up to 400 kg



Hygienic



Silent



Spacesaver

HIGH STANDARD PRODUCTS

Visam concealed cisterns have been tested by international standard institutions and have the EN 14055 product quality certificate.

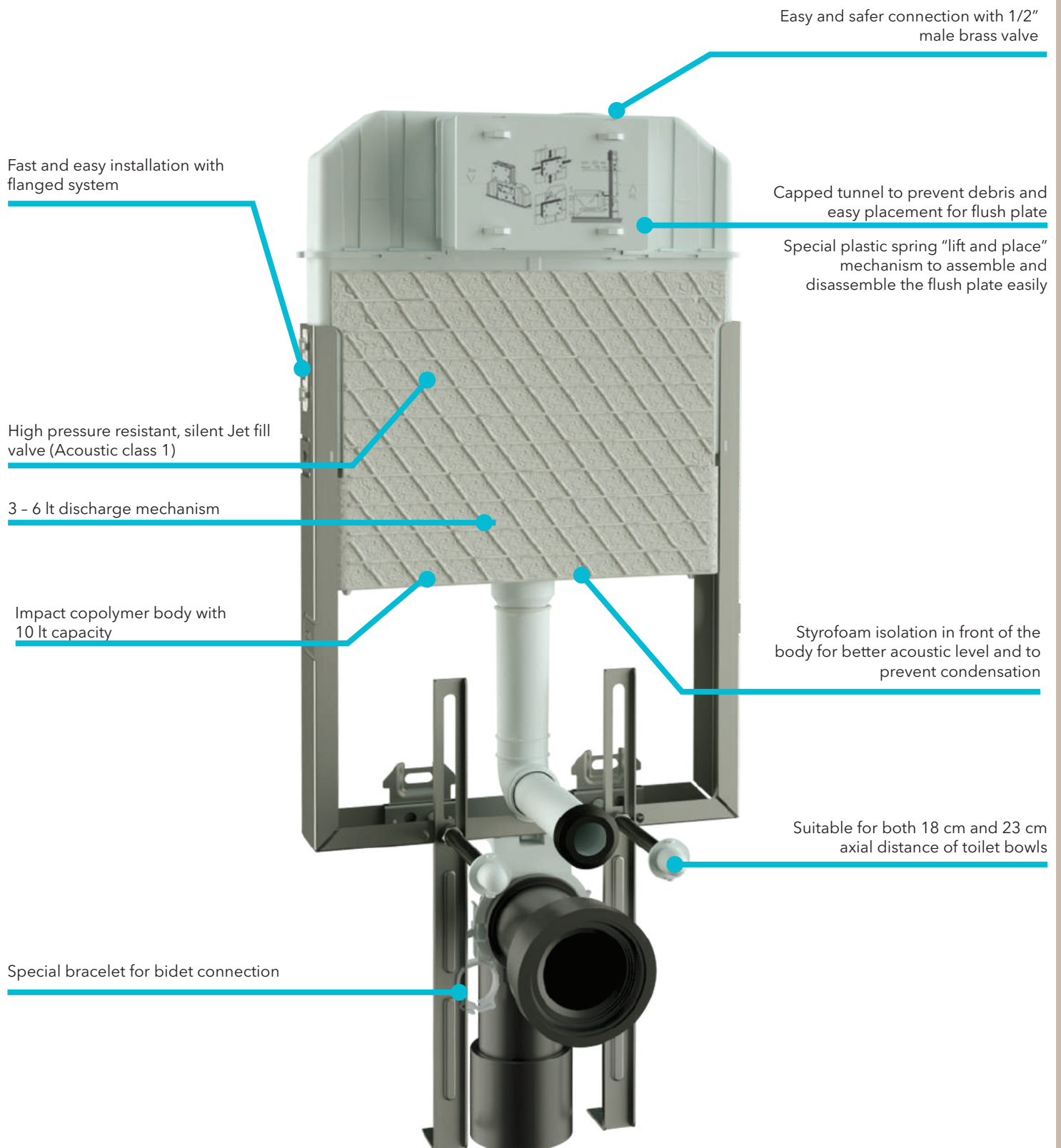


EASY AND FAST INSTALLATION IS OUR JOB

*Thanks to its fast, trouble-free
and easy assembly, it saves
both time and money.*



Visam Concealed Cisterns; Easy Installation on Brick Walls





Visam Concealed Cistern Systems Suitable For Drywall Walls





112-001

*Drywall Application
of Concealed
Cistern for Wall
Hung WC Pans*



112-002

*Drywall Application
of Free Standing
Concealed Cistern
for Wall Hung
WC Pans*



113-001

*Drywall Application
of Back to Back
Concealed Cistern
for Wall Hung
WC Pans*



110-001

*Brick Wall Application
of Concealed Cistern
for Wall Hung WC
Pans (with support
legs)*



110-002

*Brick Wall Application
of Concealed Cistern
for Wall Hung WC
Pans (without support
legs)*



111-001

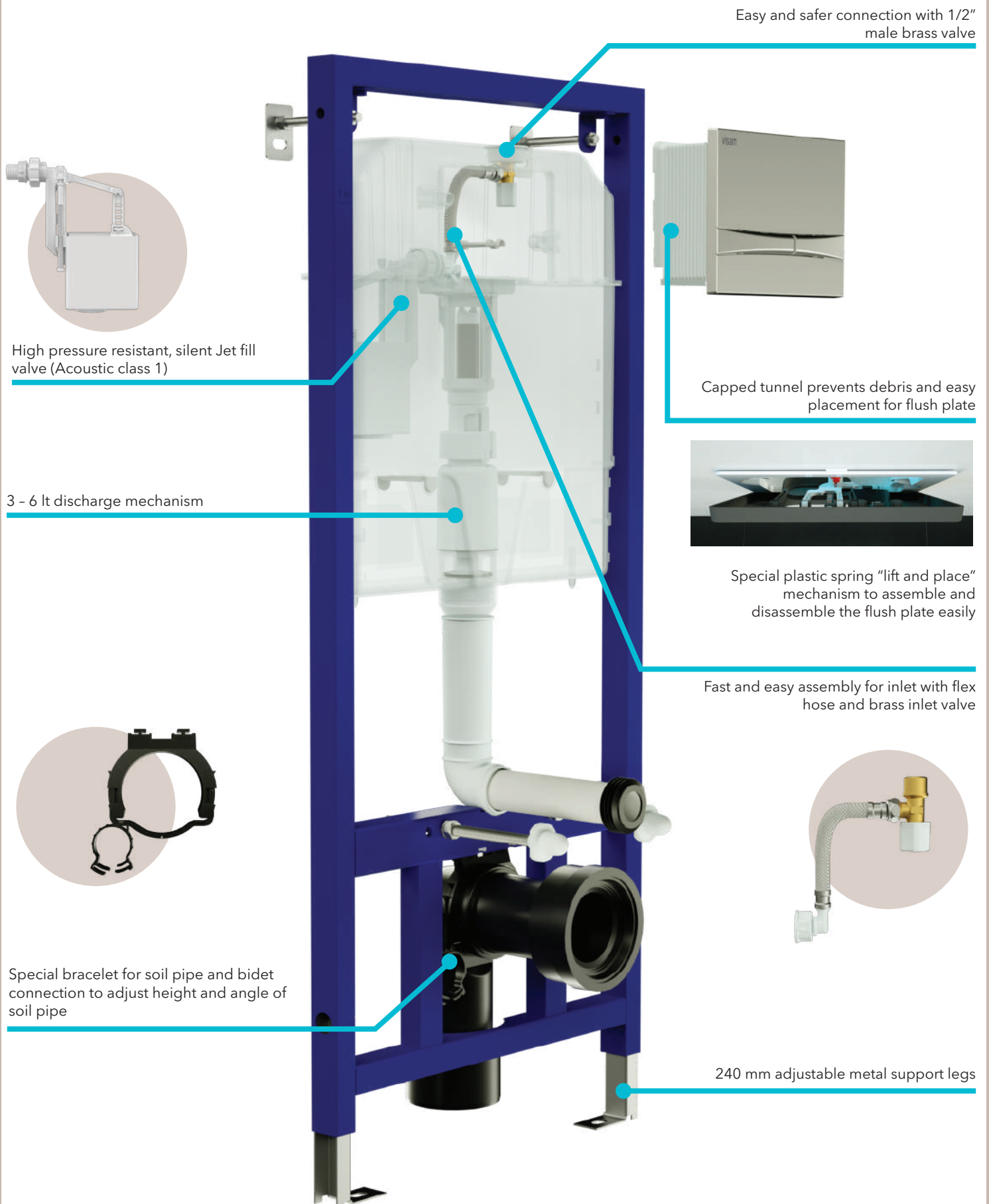
*Concealed Cistern for
Squatting WC Pans*



114-001

*Concealed Cistern
for Floor Mounted
WC Pans -
Children WC Pans*

Visam Concealed Cisterns Internal Structure



SLIM 80

*Solutions suitable for
all areas with
concealed cisterns...*



Concealed Cisterns that defy time from Visam...



SLIM 80 FOR ALL BATHROOMS

The wide product range of Visam concealed cisterns offers the most efficient and highest quality solution alternatives to all bathrooms. Concealed cisterns with a discharge capacity of 3/6 liters appeal to different tastes with different designs and various flush plate models.



Suitable for drywall and brick wall installation. Concealed Cistern can be assembled directly to the wall and floor without additional framework system.



Free Standing Concealed Cistern can be assembled to the floor directly where proper wall connection is not available.



Concealed Cistern for Back to Back application can be assembled to the floor directly.



With moving hinges Concealed Cistern can be placed on the corner.



Concealed Cistern hinges can be placed horizontally to be suitable for assembling on a framework.



Concealed Cistern for Brick Wall Application with support legs



Concealed Cistern for Brick Wall Application without support legs



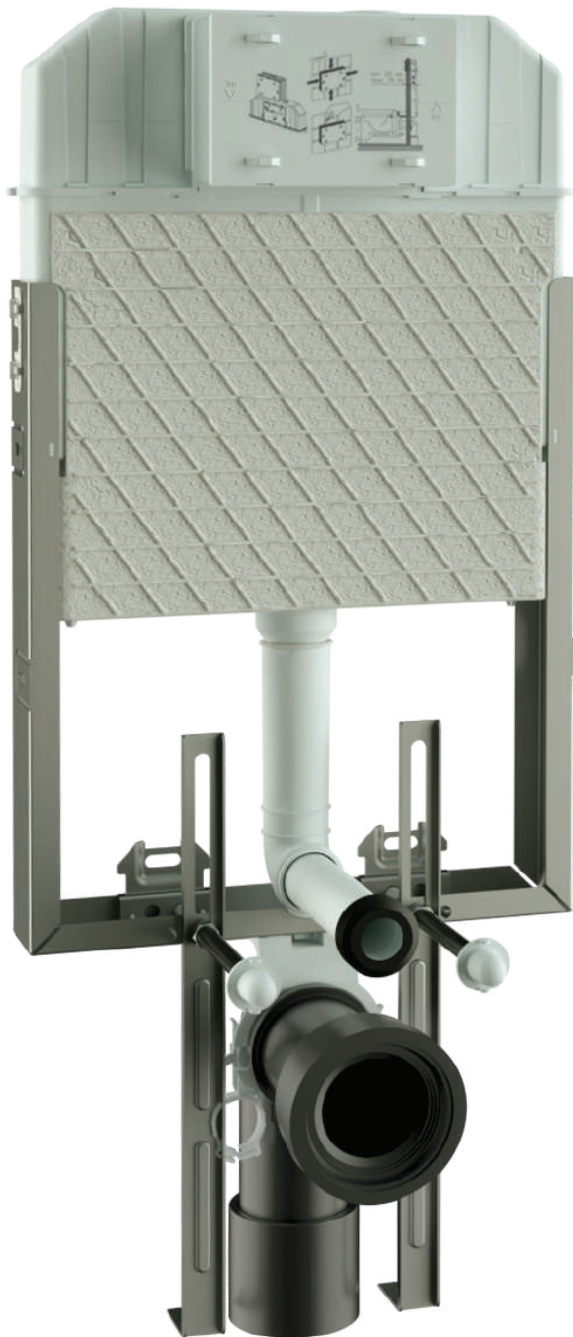
Concealed Cistern for Squatting WC Pans



Concealed Cistern for Floor Mounted WC Pans - Children WC Pans

SLIM 80

110-001 For Wall Hung WC Pans (With Support Legs)



COMPATIBLE STANDARD

EN 14055 CL 1-7-NL I-VR II

DISCHARGE VOLUME: 3/6 L

SUITABLE FOR BRICK WALL INSTALLATION

TECHNICAL DETAILS

Completely preassembled in the factory

Water tank capacity maximum 10 L

Tank depth: 80 mm

Mechanical dual flush

Water supply connection from top right with G1/2" male

1st acoustic class fill valve according to EN 14124

(Under 3 bar pressure; 9 L/min flow rate, 9 dB max. volume)

Impact copolymer special PP body with high resistant to thermal shocks and impact

Styrofoam isolation in front of the body for better acoustic level and to prevent condensation

Suitable for both 18 cm & 23 cm axial distance of toilet bowls

BOX CONTENTS

Height adjustable galvanized support legs

DN15 1/2" angle valve

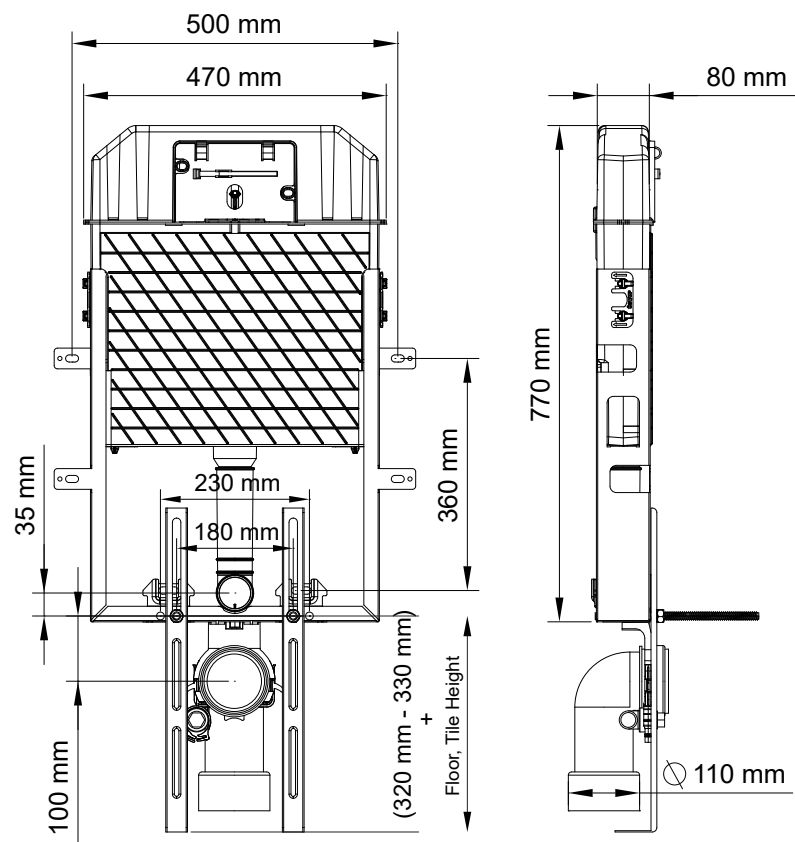
PE soil pipe (Ø90) and its 90 - 110 mm connector

Connection parts for mounting toilet bowl

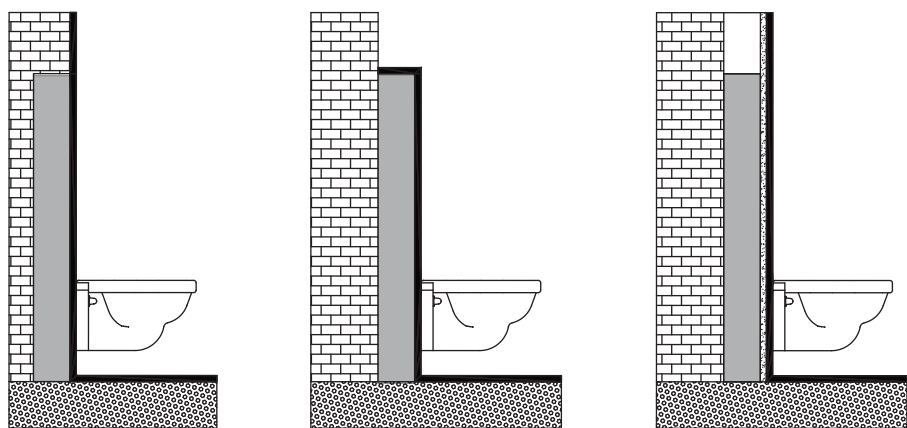
Parts that will be necessary for installation and connection

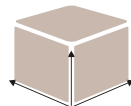


Technical Drawing



Application Alternatives



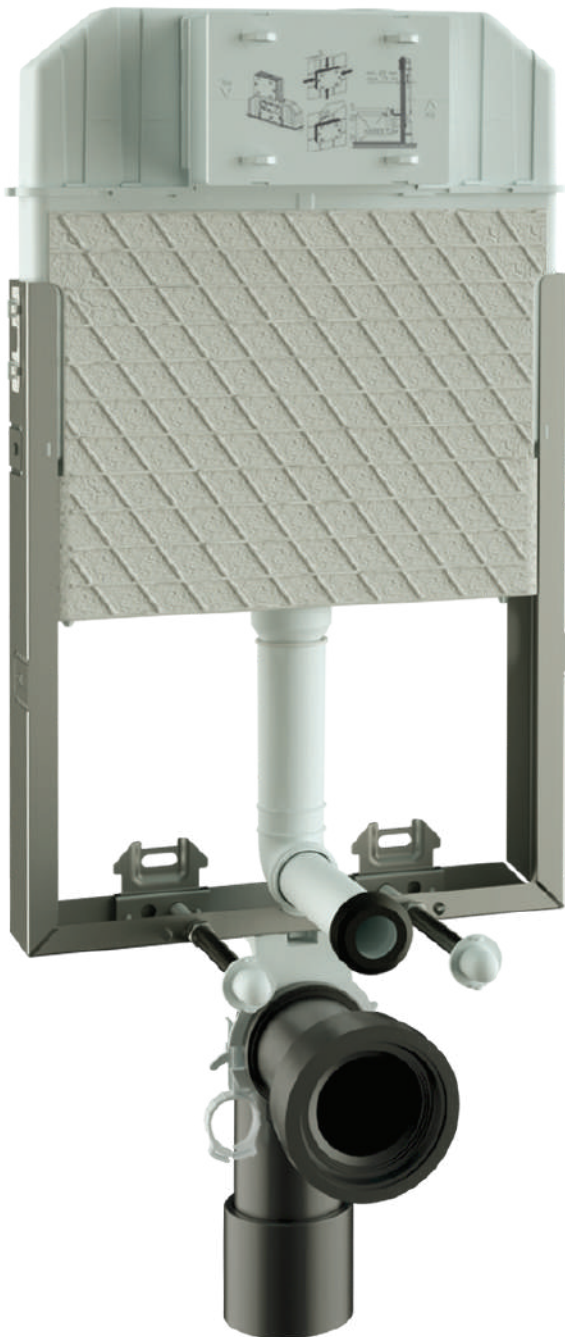


PACKING	
PCS IN A BOX	1
BOX DIMENSIONS (CM)	14*91*78
GROSS WEIGHT OF BOXS (KG)	7

Visam reserves the right to make changes on the products in terms of shape, color etc. for its future studies.

SLIM 80

110-002 For Wall Hung WC Pans (Without Support Legs)



COMPATIBLE STANDARD
EN 14055 CL 1-7-NL I-VR II
DISCHARGE VOLUME: 3/6 L
SUITABLE FOR BRICK WALL INSTALLATION

TECHNICAL DETAILS

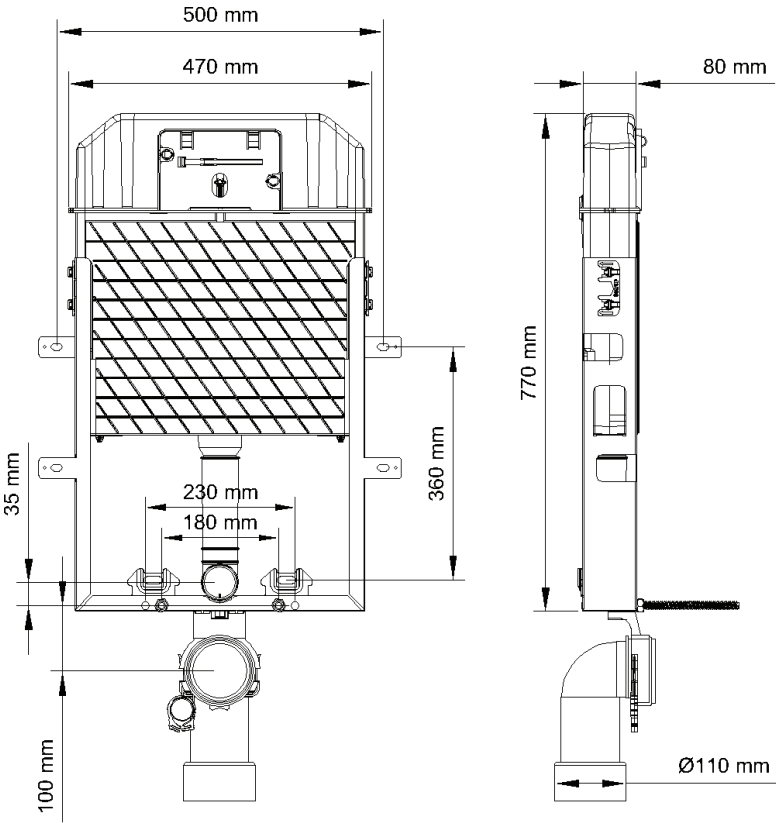
Completely preassembled in the factory
Water tank capacity maximum 10 L
Tank depth: 80 mm
Mechanical dual flush
Water supply connection from top right with G1/2" male
1st acoustic class fill valve according to EN 14124
(Under 3 bar pressure; 9 L/min flow rate, 9 dB max. volume)
Impact copolymer special PP body with high
resistant to thermal shocks and impact
Styrofoam isolation in front of the body for better
acoustic level and to prevent condensation
Suitable for both 18 cm & 23 cm axial distance of toilet bowls

BOX CONTENTS

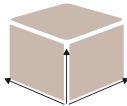
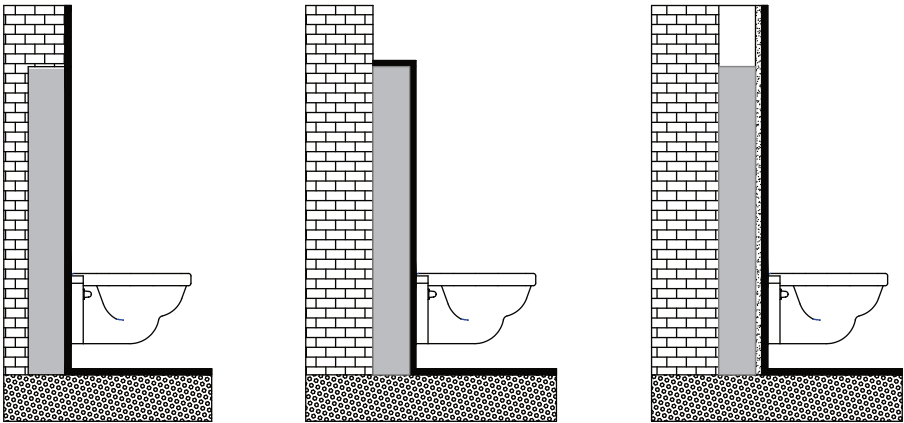
DN15 1/2" angle valve
PE soil pipe (Ø90) and its 90 - 110 mm connector
Connection parts for mounting toilet bowl
Parts that will be necessary for installation and connection



Technical Drawing



Application Alternatives



PACKING	
PCS IN A BOX	1
BOX DIMENSIONS (CM)	14*91*48
GROSS WEIGHT OF BOXS (KG)	6,04

Visam reserves the right to make changes on the products in terms of shape, color etc. for its future studies.

SLIM 80

114-001 For Floor Mounted WC Pans- Children WC Pans



COMPATIBLE STANDARD
EN 14055 CL 1-7-NL I-VR II
DISCHARGE VOLUME: 3/6 L
SUITABLE FOR BRICK WALL INSTALLATION

TECHNICAL DETAILS

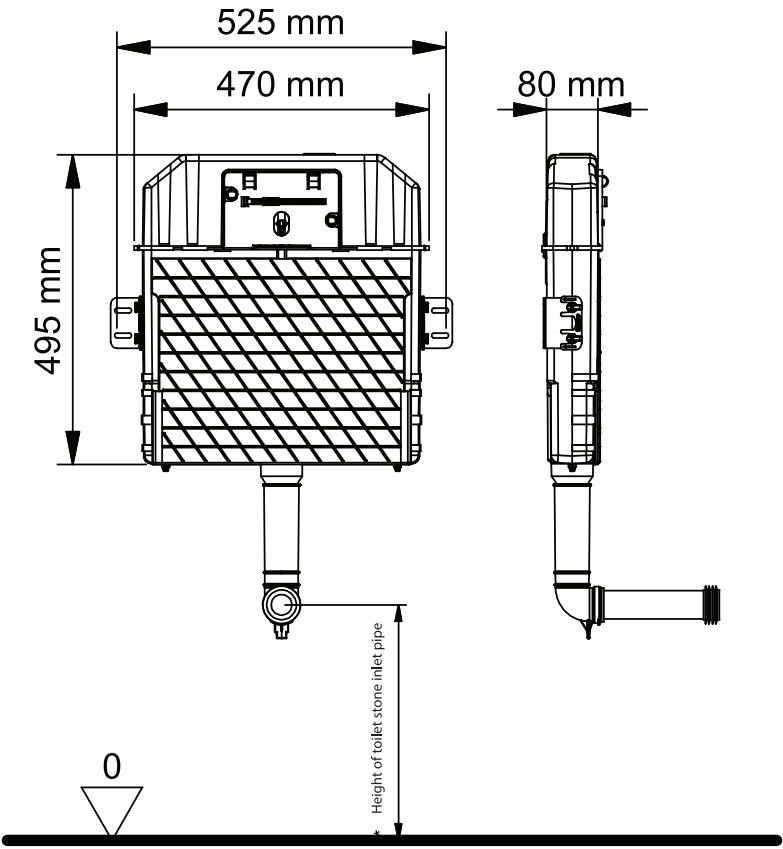
Completely preassembled in the factory
Water tank capacity maximum 10 L
Tank depth: 80 mm
Mechanical dual flush
Water supply connection from top right with G1/2" male
1st acoustic class fill valve according to EN 14124
(Under 3 bar pressure; 9 L/min flow rate, 9 dB max. volume)
Impact copolymer special PP body with high
resistant to thermal shocks and impact
Styrofoam isolation in front of the body for better
acoustic level and to prevent condensation

BOX CONTENTS

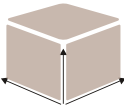
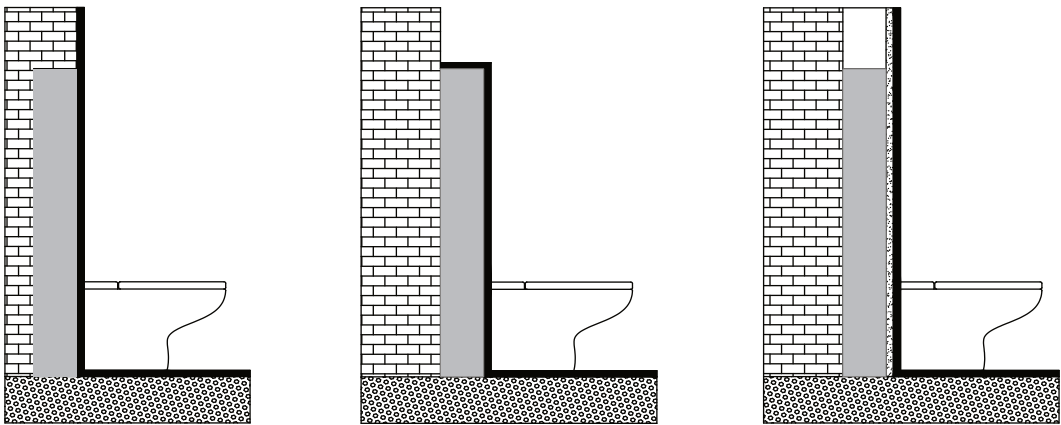
DN15 1/2" angle valve
Parts that will be necessary for installation and connection



Technical Drawing



Application Alternatives



PACKING	
PCS IN A BOX	1
BOX DIMENSIONS (CM)	10*80*54
GROSS WEIGHT OF BOXS (KG)	3,5

Visam reserves the right to make changes on the products in terms of shape, color etc. for its future studies.

SLIM 80

111-001 For Squatting WC Pans



COMPATIBLE STANDARD

EN 14055 CL 1-7-NL I-VR II

DISCHARGE VOLUME: 3/6 L

SUITABLE FOR BRICK WALL INSTALLATION

TECHNICAL DETAILS

Completely preassembled in the factory

Water tank capacity maximum 10 L

Tank depth: 80 mm

Mechanical dual flush

Water supply connection from top right with G1/2" male

1st acoustic class fill valve according to EN 14124

(Under 3 bar pressure; 9 L/min flow rate, 9 dB max. volume)

Impact copolymer special PP body with high resistant to thermal shocks and impact

Styrofoam isolation in front of the body for better acoustic level and to prevent condensation

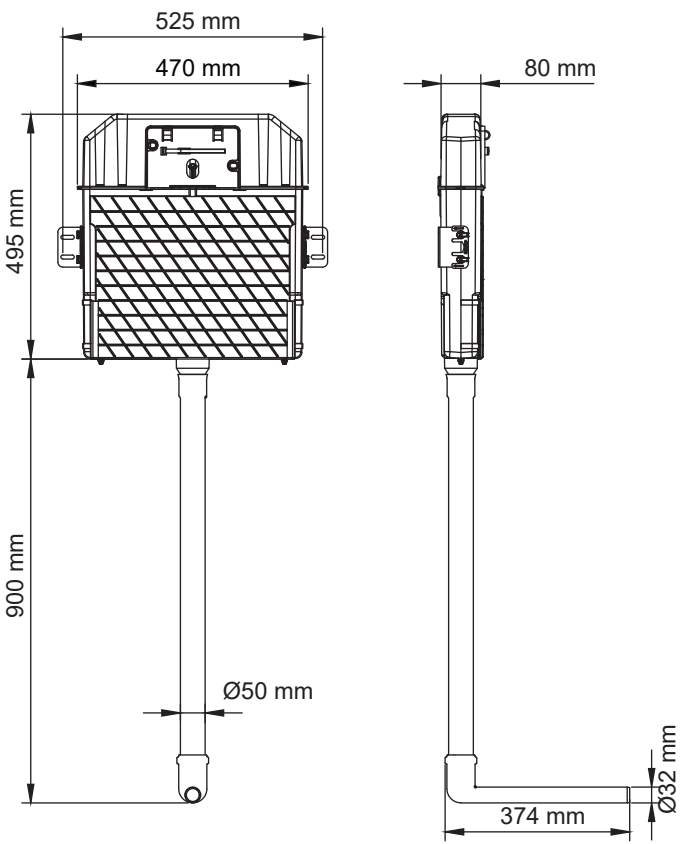
BOX CONTENTS

DN15 1/2" angle valve

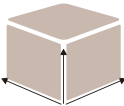
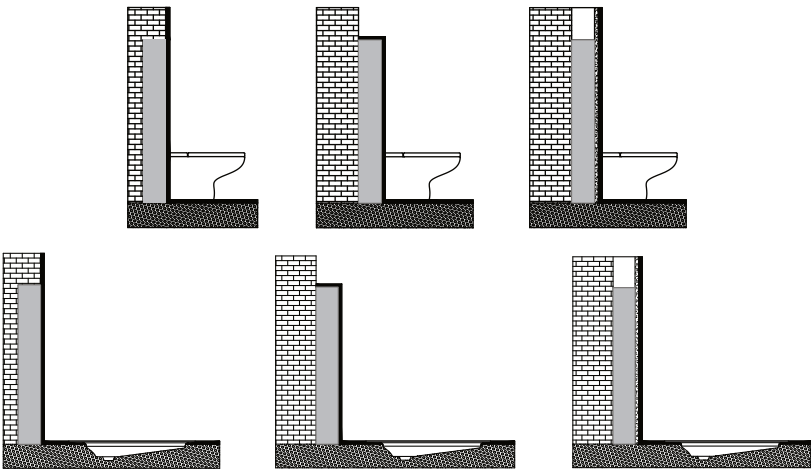
Parts that will be necessary for installation and connection



Technical Drawing



Application Alternatives



PACKING	
PCS IN A BOX	1
BOX DIMENSIONS (CM)	9,5*79*53
GROSS WEIGHT OF BOXS (KG)	3,8

Visam reserves the right to make changes on the products in terms of shape, color etc. for its future studies.

SLIM 80

112-001 For Drywalls



COMPATIBLE STANDARD

EN 14055 CL 1-7-NL I-VR II

DISCHARGE VOLUME: 3/6 L

SUITABLE FOR DRYWALL AND BRICK WALL
INSTALLATION

TECHNICAL DETAILS

Completely preassembled in the factory

Water tank capacity maximum 10 L

Tank depth: 80 mm

Overall thickness including the frame: 100 mm

Mechanical dual flush

Water supply connection from top right with G1/2" male

1st acoustic class fill valve according to EN 14124

(Under 3 bar pressure; 9 L/min flow rate, 9 dB max. volume)

Impact copolymer special PP body with high resistant
to thermal shocks and impact

Styrofoam isolation covered body for better
acoustic level and to prevent condensation

Electrostatic powder coated metal frame

WC pan hanging rods can bear up to 400 kg

Suitable for both 18 cm & 23 cm axial distance of toilet bowls

BOX CONTENTS

Height adjustable galvanized support legs

DN15 1/2" angle valve

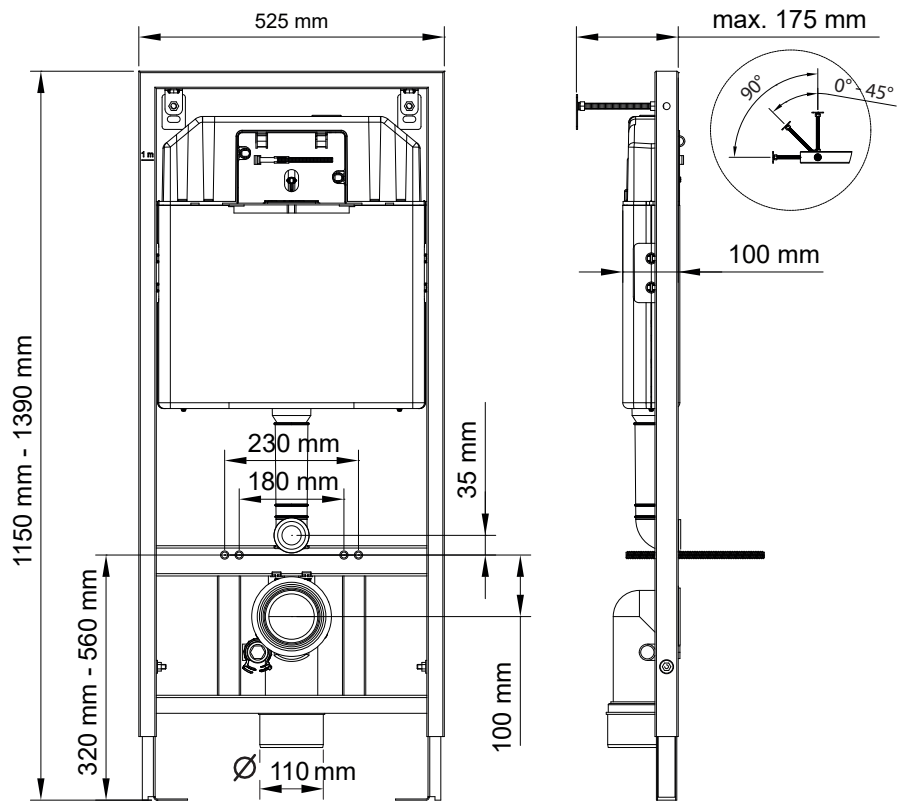
PE soil pipe (Ø90) and its 90 - 110 mm connector

Connection parts for mounting toilet bowl

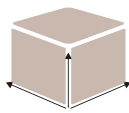
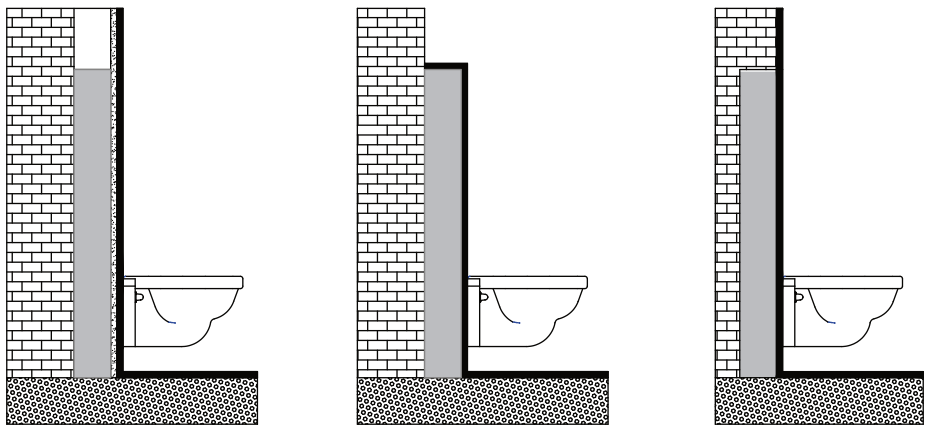
Parts that will be necessary for installation and connection



Technical Drawing



Application Alternatives



PACKING	
PCS IN A BOX	1
BOX DIMENSIONS (CM)	14*116*54
GROSS WEIGHT OF BOXS (KG)	12,5

Visam reserves the right to make changes on the products in terms of shape, color etc. for its future studies.

SLIM 80

112-002 For Drywalls Free Standing



COMPATIBLE STANDARD

EN 14055 CL 1-7-NL I-VR II

DISCHARGE VOLUME: 3/6 L

SUITABLE FOR DRYWALL AND BRICK WALL
INSTALLATION

TECHNICAL DETAILS

Completely preassembled in the factory

Water tank capacity maximum 10 L

Tank depth: 80 mm

Overall thickness including the frame: 100 mm

Mechanical dual flush

Water supply connection from top right with G1/2" male

1st acoustic class fill valve according to EN 14124

(Under 3 bar pressure; 9 L/min flow rate, 9 dB max. volume)

Impact copolymer special PP body with high resistant
to thermal shocks and impact

Styrofoam isolation covered body for better
acoustic level and to prevent condensation

Electrostatic powder coated metal frame

WC pan hanging rods can bear up to 400 kg

Suitable for both 18 cm & 23 cm axial distance of toilet bowls

BOX CONTENTS

Height adjustable galvanized support legs

DN15 1/2" angle valve

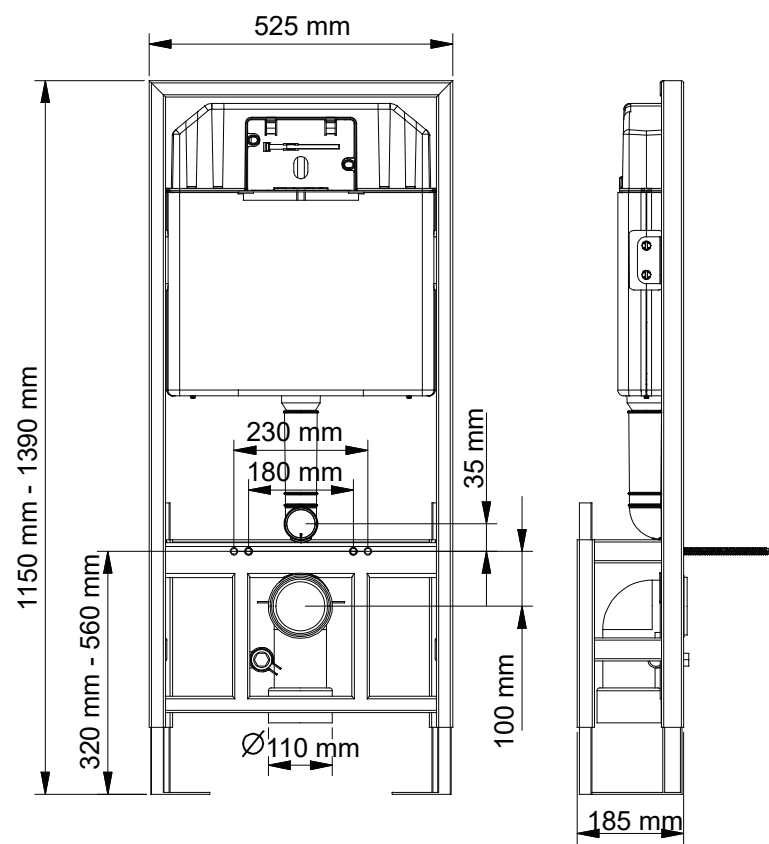
PE soil pipe (Ø90) and its 90 - 110 mm connector

Connection parts for mounting toilet bowl

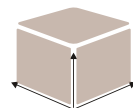
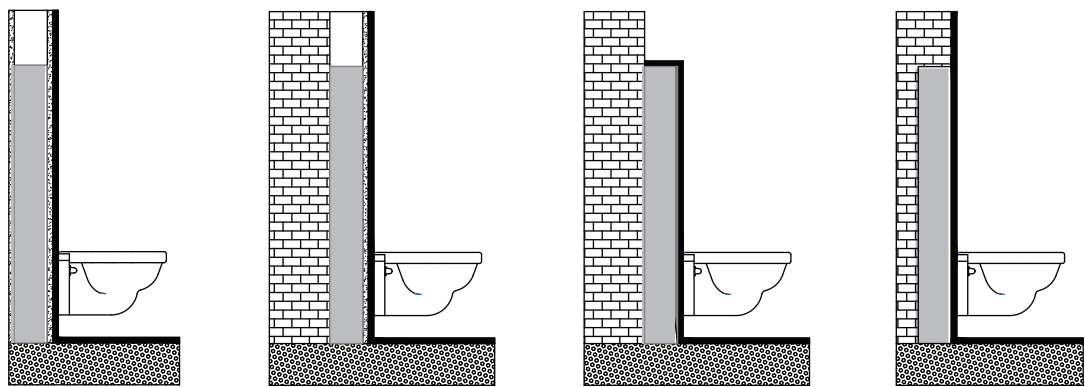
Parts that will be necessary for installation and connection



Technical Drawing



Application Alternatives



PACKING	
PCS IN A BOX	1
BOX DIMENSIONS (CM)	26*117*55
GROSS WEIGHT OF BOXS (KG)	16,5

Visam reserves the right to make changes on the products in terms of shape, color etc. for its future studies.

SLIM 80

113-001 For Drywalls Back To Back



COMPATIBLE STANDARD

EN 14055 CL 1-7-NL I-VR II

DISCHARGE VOLUME: 3/6 L

SUITABLE FOR DRYWALL AND BRICK WALL
INSTALLATION

TECHNICAL DETAILS

Completely preassembled in the factory

Water tank capacity maximum 10 L

Tank depth: 80 mm

Overall thickness including the frame: 100 mm

Mechanical dual flush

Water supply connection from top right with G1/2" male

1st acoustic class fill valve according to EN 14124

(Under 3 bar pressure; 9 L/min flow rate, 9 dB max. volume)

Impact copolymer special PP body with high resistant
to thermal shocks and impact

Styrofoam isolation covered body for better
acoustic level and to prevent condensation

Electrostatic powder coated metal frame

WC pan hanging rods can bear up to 400 kg

Suitable for both 18 cm & 23 cm axial distance of toilet bowls

BOX CONTENTS

Height adjustable galvanized support legs

DN15 1/2" angle valve

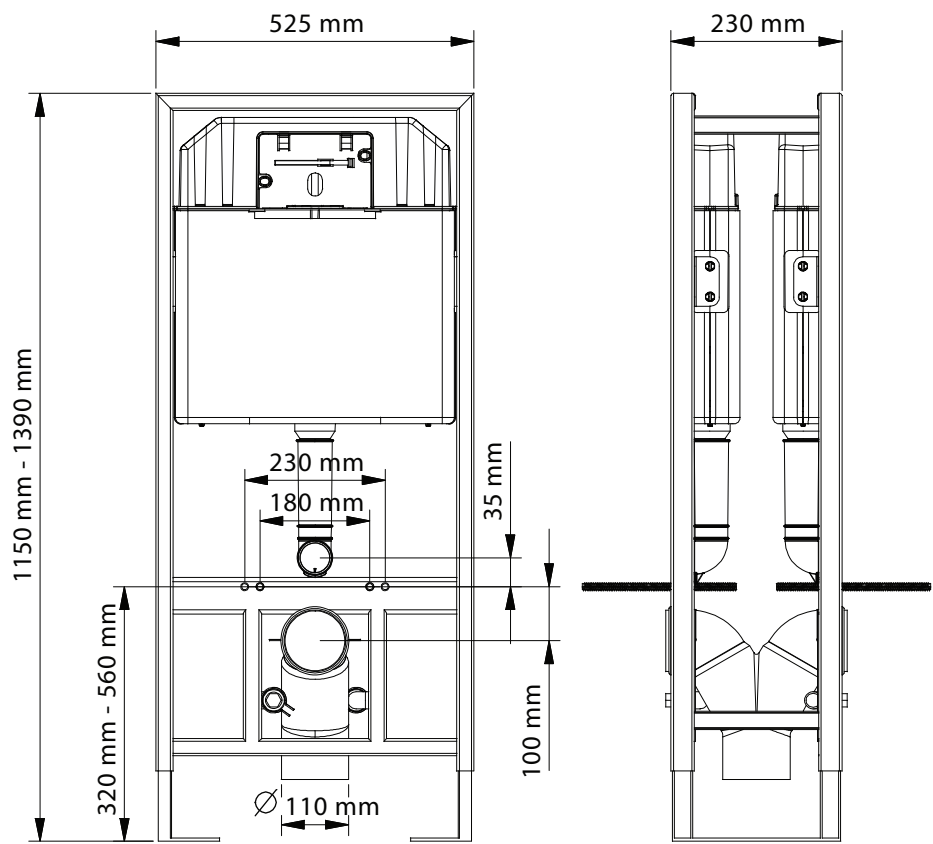
PE soil pipe (Ø90) and its 90 - 110 mm connector

Connection parts for mounting toilet bowl

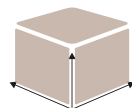
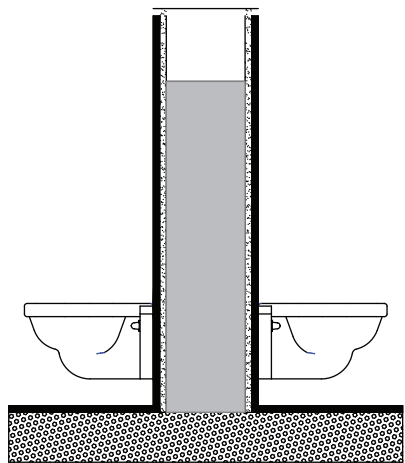
Parts that will be necessary for installation and connection



Technical Drawing



Application Alternatives



PACKING	
PCS IN A BOX	1
BOX DIMENSIONS (CM)	26*117*55
GROSS WEIGHT OF BOXS (KG)	25

Visam reserves the right to make changes on the products in terms of shape, color etc. for its future studies.

EXPOSED GLASS BODY CISTERN

*Installation without breaking
the wall, with clean and
noiseless application*



Exposed Glass Body Cisterns add an elegant touch to the bathrooms with modern and stylish look.



Alternative Colors

Visam Exposed Glass Body Cisterns offer two color options as black and white.

Modern

Visam Exposed Glass Body Cistern is a solution to renew bathrooms in a modern way, with a minimalist and elevated design.



Water Saving

Visam Exposed Glass Body Cistern provides dual flush washing with 3/6 lt discharge volume that is efficiently water-saving.



User-friendly

Thanks to its 8 mm thick tempered glass body, it is durable and impact resistant. It provides easy repairing opportunity because of its easily removable glass panels in case of maintenance required.

METAL FRAME SYSTEMS

*Frames offer different solutions
on drywalls for bidets,
washbasins and urinals.*





Easy Installation with Metal Frame Systems

Visam metal frame systems offer quick and easy solutions for the installation of washbasins, urinals and bidets in the bathrooms.



Washbasin Frame 893-005

Compatible with all washbasin installations. It has hot & cold water connectors.



Washbasin Frame 893-004

Compatible with all washbasin installations.



Urinal Frame 893-009

Compatible with all urinal installations.



Bidet Frame 893-003

*Compatible with all bidet installations.
It has hot & cold water connectors.*



Bidet Frame 893-002

Compatible with all bidet installations.



Bidet Frame 893-007

*Compatible with all bidet installations.
It has hot & cold water connectors, and
higher strength for carrying up more
than 500 kgs.*

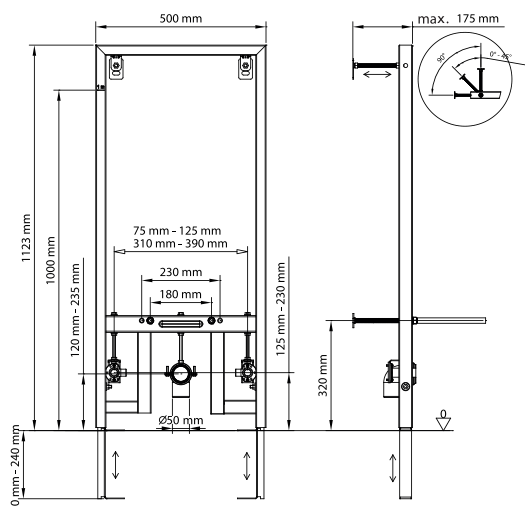


Bidet Frame 893-006

*Compatible with all bidet installations.
It has higher strength for carrying up
more than 500 kgs.*

893-003 Wall-Hung Bidet / WC Frame

(Including Hot / Cold Water Connectors)



SUITABLE FOR DRYWALL AND BRICK WALL INSTALLATION

TECHNICAL DETAILS

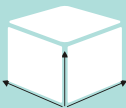
- Electrostatic powder coated metal frame
- Height adjustable system
- Corner installation availability
- Ø50 mm PVC elbow and height adjustable clamp
- Adjustable brass water connectors
- High strength frame carrying up to 400 kg
- Suitable for both 18 cm & 23 cm axial distance of toilet bowls / bidets

BOX CONTENTS

- Height adjustable galvanized support legs
- Connection parts for mounting toilet bowl / bidet
- Parts that will be necessary for installation and connection



endurance up to 400 kg



PACKING	
PCS IN A BOX	1
BOX DIMENSIONS (CM)	8*113*53
GROSS WEIGHT OF BOXS (KG)	9,5

893-002 Wall-Hung Bidet / WC Frame

SUITABLE FOR DRYWALL AND BRICK
WALL INSTALLATION

TECHNICAL DETAILS

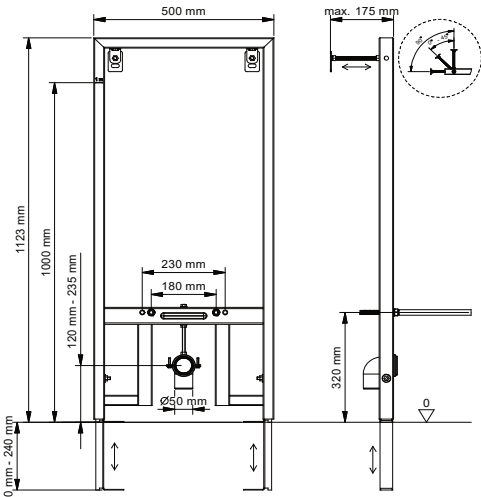
- Electrostatic powder coated metal frame
- Height adjustable system
- Corner installation availability
- Ø50 mm PVC elbow and height adjustable clamp
- High strength frame carrying up to 400 kg
- Suitable for both 18 cm and 23 cm axial distance of toilet bowls / bidets

BOX CONTENTS

- Height adjustable galvanized support legs
- Connection parts for mounting toilet bowl / bidet
- Parts that will be necessary for installation and connection



endurance up to 400 kg



PACKING	
PCS IN A BOX	1
BOX DIMENSIONS (CM)	8*113*53
GROSS WEIGHT OF BOXS (KG)	8,5

893-007 Wall-Hung Bidet / WC Frame Higher Strength (Including Hot / Cold Water Connectors)

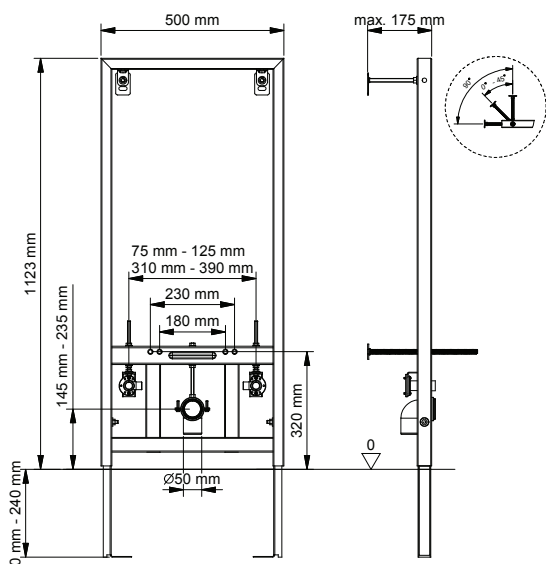


SUITABLE FOR DRYWALL AND BRICK
WALL INSTALLATION

TECHNICAL DETAILS

BOX CONTENTS

endurance up to 500 kg



PACKING	
PCS IN A BOX	1
BOX DIMENSIONS (CM)	8*113*53
GROSS WEIGHT OF BOXS (KG)	10,5

893-006 Wall-Hung Bidet / WC Frame Higher Strength

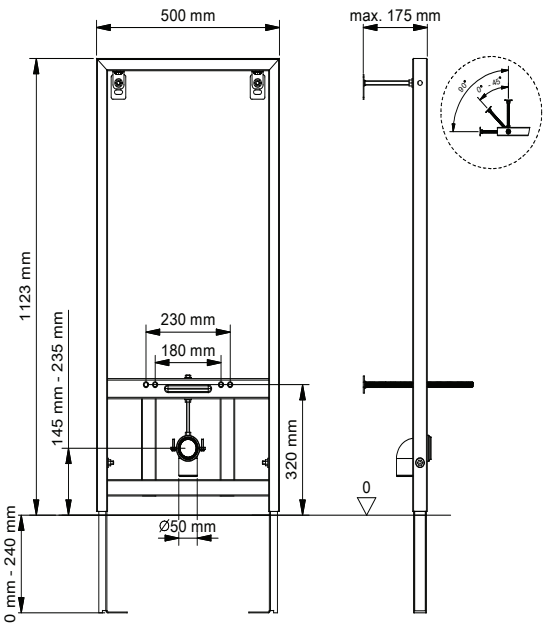
SUITABLE FOR DRYWALL AND BRICK
WALL INSTALLATION

TECHNICAL DETAILS

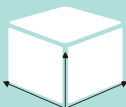
- Electrostatic powder coated metal frame
- Height adjustable system
- Corner installation availability
- Ø50 mm PVC elbow and height adjustable clamp
- Higher strength frame carrying up to 500 kg
- Suitable for both 18 cm and 23 cm axial distance of toilet bowls / bidets

BOX CONTENTS

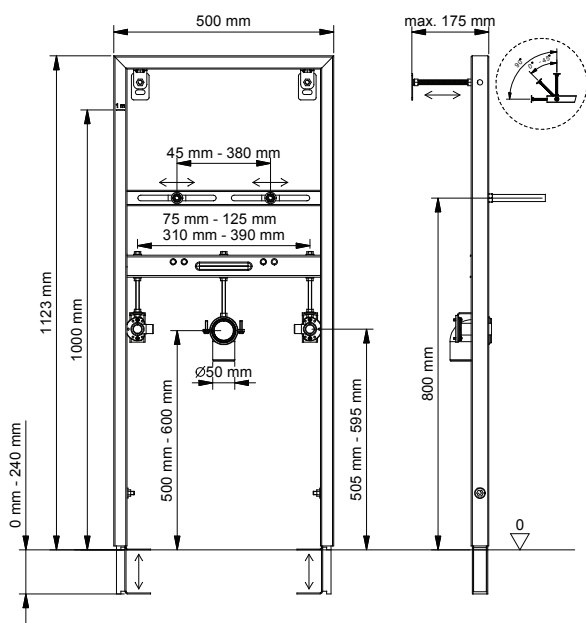
- Height adjustable galvanized support legs
- Connection parts and plates for mounting toilet bowl / bidet
- Parts that will be necessary for installation and connection



endurance up to 500 kg



PACKING	
PCS IN A BOX	1
BOX DIMENSIONS (CM)	8*113*53
GROSS WEIGHT OF BOXS (KG)	8,9



endurance up to 150 kg



PACKING	
PCS IN A BOX	1
BOX DIMENSIONS (CM)	7*112*51
GROSS WEIGHT OF BOXS (KG)	8.5

893-004 Wall-Hung Washbasin Frame

SUITABLE FOR DRYWALL AND BRICK
WALL INSTALLATION

TECHNICAL DETAILS

- Electrostatic powder coated metal frame
- Height adjustable system
- Corner installation availability
- Ø50 mm PVC elbow and height adjustable clamp
- High strength frame carrying up to 150 kg
- Adjustable for 4.5 cm to 38 cm axial distance of washbasin fixing holes

BOX CONTENTS

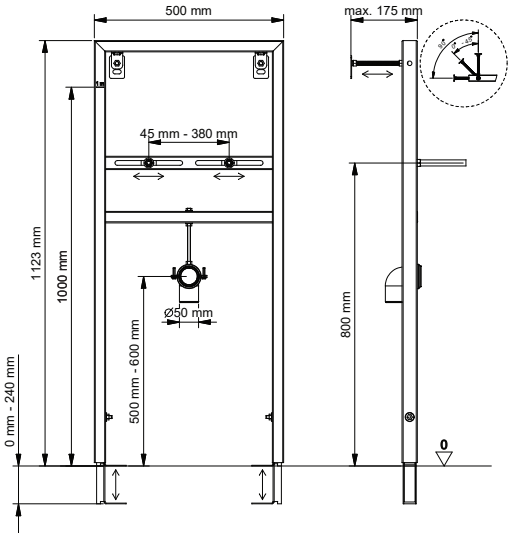
- Height adjustable galvanized support legs
- Connection parts for mounting washbasin
- Parts that will be necessary for installation and connection



endurance up to 150 kg



PACKING	
PCS IN A BOX	1
BOX DIMENSIONS (CM)	7*112*51
GROSS WEIGHT OF BOXES (KG)	8



893-001 Wall-Hung WC Support



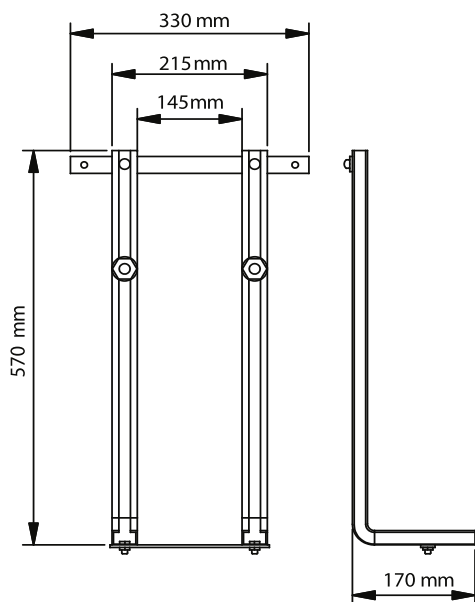
QUICK AND EASY INSTALLATION

TECHNICAL DETAILS

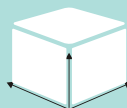
- Corrosion resistant galvanised sheet metal legs
- Height adjustable system
- High strength frame carrying up to 150 kg

BOX CONTENTS

- Height adjustable galvanized support legs
- Connection parts for mounting bidet
- Parts that will be necessary for installation and connection



endurance up to 150 kg



PACKING	
PCS IN A BOX	10
BOX DIMENSIONS (CM)	5*60*20
GROSS WEIGHT OF BOXES (KG)	25

893-009 Urinal Frame

SUITABLE FOR DRYWALL AND BRICK
WALL INSTALLATION

TECHNICAL DETAILS

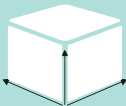
- Electrostatic powder coated metal frame
- Height adjustable system
- Corner installation availability
- Ø50 mm PVC elbow and height adjustable clamp
- G1/2" water connection
- High strength frame carrying up to 150 kg
- Adjustable for 10 cm to 37 cm axial distance of urinal fixing holes

BOX CONTENTS

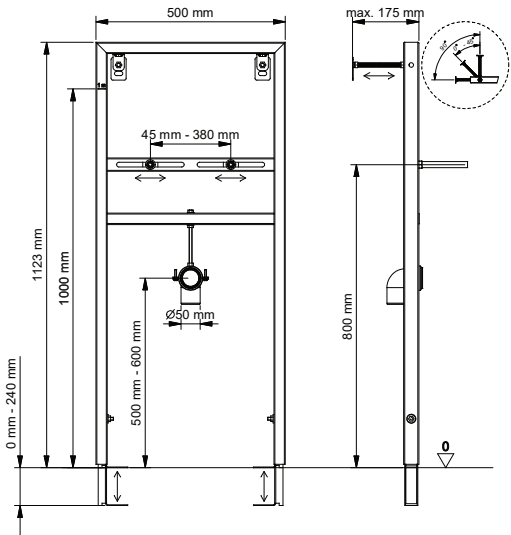
- Height adjustable galvanized support legs
- Connection parts for mounting urinal
- Parts that will be necessary for installation and connection

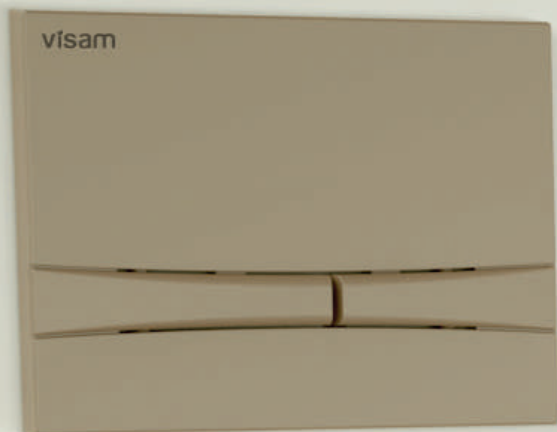


endurance up to 150 kg



PACKING	
PCS IN A BOX	1
BOX DIMENSIONS (CM)	7*112*51
GROSS WEIGHT OF BOXS (KG)	8





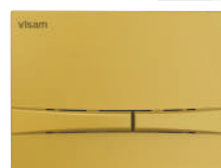
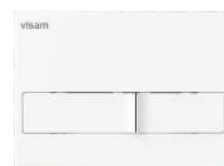
FLUSH PLATES

*add an elegant touch
to the bathrooms with
different design alternatives.*



Concealed Cistern Flush Plates for Different Tastes

Concealed cistern flush plates, which are designed and manufactured considering contemporary architectural elements, are compatible with all Visam concealed cisterns. We produce them for every taste and style with different color alternatives according to the trends.



Stylish and Functional Flush Plates

With glossy, matt or silky surface alternatives, Visam Flush Plates add a personal touch for a uniquely designed modern bathroom.

Olimpos



230-002 Bright Chrome



230-001 Matt Chrome



230-005 Matt Gold



230-017 Black



230-003 White

Mia



229-002 Bright Chrome



229-001 Matt Chrome



229-005 Matt Gold



229-017 Black



229-003 White

Siena



228-002 Bright Chrome



228-001 Matt Chrome



228-005 Matt Gold



228-017 Black



228-003 White

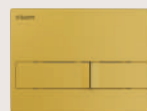
Karina



226-002 Bright Chrome



226-001 Matt Chrome



226-005 Matt Gold



226-017 Black



226-003 White

Alinda



227-002 Bright Chrome



227-001 Matt Chrome



227-005 Matt Gold



227-017 Black



227-003 White

Didim



228-003 Bright Chrome



223-001 Matt Chrome



223-005 Matt Gold



223-017 Black



223-003 White

Perge



225-002 Bright Chrome



225-001 Matt Chrome



225-005 Matt Gold



225-017 Black



225-003 White

Efes



220-002 Bright Chrome



220-001 Matt Chrome



220-005 Matt Gold



220-017 Black



220-003 White

* PVD gold option is also available.

Surface Finish Alternatives of Colored Flush Plates



Soft touch Anthracite



Matt Anthracite



Glossy Anthracite

* Different colors options are available.

Concealed Cistern Spare Parts



150-578 Holder



652-002 Jet Fill Valve



900-001 Discharge Group



460-740 Gasket



150-741 O-ring



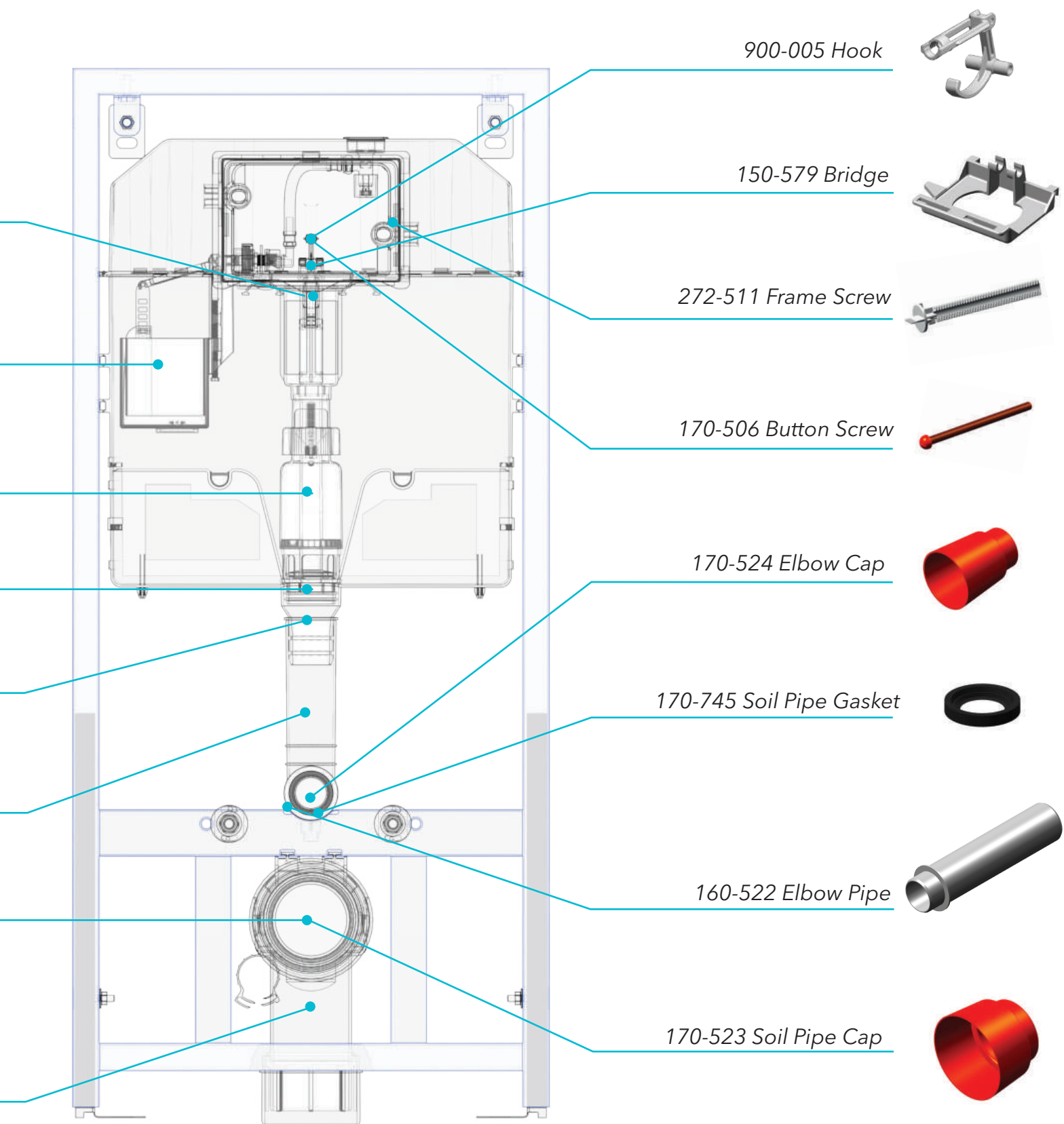
150-585 Elbow



170-764 Soil pipe



170-763 Soil Elbow





FROM PAST TO FUTURE...

By scanning the code,
you could access to our website.



www.visam.com.tr



We've been part of your solutions since 1964

Factory and Head Quarter

Pınar Caddesi No: 72 Pınarbaşı / İzmir

T. +90 232 479 07 00 (Pbx) F. +90 232 479 03 58

export@visam.com.tr



/ visam_tr



VisamPlastikA.S.



/ visamplastik